



GRASSHOPPER™
CONCRETE BLOCKS
& PAVEMENT TILES



Since 2008

Concrete Blocks & Pavement Tiles | Construction | Industrial Pumps
Fire & Building Safety System | Renewable Energy | Power Generators

Grasshopper Building Materials Ltd. - GBML

A manufacturing company of Grasshopper Group, established in 2021 with a vision to produce eco-friendly building materials. Currently we are producing concrete solid blocks, concrete hollow blocks, kerb stone, uni pavers and pavement tiles. We have established our first production facility at Savar and the next one is coming soon in Sreepur. The factory is fully equipped with automatic production line and using state of the art technology to produce the most efficient products with highest strength and attractive finishing. We are continuously involved in research & development to produce light-weight, strong and perfectly finished products with aesthetic value to our customers.



YOUR
BUILDING
PARTNER

Representation & Enlistments

- FBCCI - Federation of Bangladesh Chambers of Commerce & Industries
- DCCI - Dhaka Chamber of Commerce & Industry
- NFPA - National Fire Protection Association, USA
- ESSAB - Electronics Safety and Security Association of Bangladesh
- BIAA - Bangladesh Indenting Agents Association
- BMCCI - Bangladesh-Malaysia Chamber of Commerce and Industry
- BPTMA - Bangladesh Pipe & Tubewell Merchants Association
- BCBPMS - Bangladesh Concrete Block Prostutkarak Malik Somitee
- DIFE - Department of Inspection for Factories and Establishments
- TAITRA - Taiwan External Trade Development Council

FOUNDERS



Md. Tanjir Omor Faruq
Chairman
Grasshopper Building Materials Ltd.



M. Mahmudur Rashid
Managing Director
Grasshopper Building Materials Ltd.

Vice President, Electronics Safety and Security Association of Bangladesh (ESSAB),
Director, Bangladesh Indenting Agents' Association (BIAA)
Director, Bangladesh-Malaysia Chamber of commerce and Industry (BMCCI)
General Body Member, The Federation of Bangladesh Chambers of Commerce and Industry (FBCCI)



Ar. Dr. Masud Ur Rashid
Director
Grasshopper Building Materials Ltd.

Chairman & Associate Professor, Department of Architecture, Southeast University
Joint Secretary General, Institute of Architects Bangladesh (IAB)



Farhia Nowrin
Director
Grasshopper Building Materials Ltd.

GRASSHOPPER™
CONCRETE BLOCKS
& PAVEMENT TILES

WHY CONCRETE BLOCKS ?

- Eco-friendly compared to traditional bricks.
- Highly durable, compacted under high pressure and vibration
- Cost-effective, reduces structural costs, labor and mortar costs
- Ideal solution for fast construction, uniform size, flat surface and shape
- Offers superior earthquake resistance.
- Noise reduction, fire resistance and heat insulation.
- Low water absorption.
- Design flexibility and customization
- Produced with electricity on automated and advanced manufacturing facility.
- Up to 25% cost effective overall compared to traditional bricks.
- Protects precious agricultural land that is extensively mined to produce clay bricks.



GRASSHOPPER™
CONCRETE BLOCKS
& PAVEMENT TILES

CONCRETE SOLID BLOCKS



SCB114G

Premium Finish



SCB114

Economy Finish

Dimension (mm)	240 x 114 x 70	240 x 114 x 70
Color	Grey / Red /Black	Grey
Average Weight	3.4 KG	3.8 KG
PSI	2,000	2,000

THREE HOLE BRICK

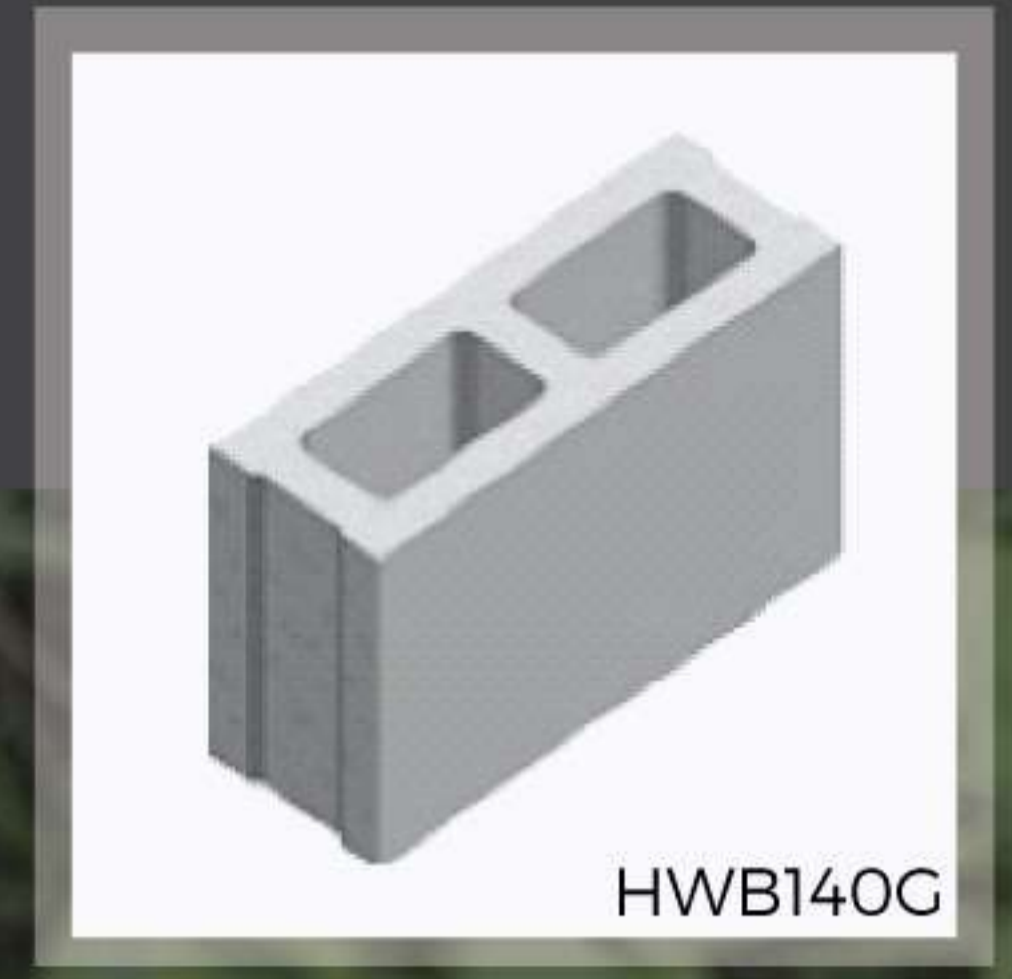


THB110C

Dimension (mm)	230 x 110 x 75
Color	Grey
Average Weight	3.3 KG
PSI	2,000



HOLLOW BLOCK



Dimension (mm)	390 x 190 x 100	390 x 190 x 112	390 x 190 x 140
Color	Grey	Grey	Grey
Average Weight	12.8 KG	13.8 KG	16 KG
PSI	2,000	2,000	2,000



Dimension (mm)	390 x 190 x 190	390 x 190 x 240	400 x 200 x 200
Color	Grey	Grey	Grey
Average Weight	19.5 KG	22.0 KG	20.8 KG
PSI	2,000	2,000	2,000



Dimension (mm)	400 x 200 x 150
Color	Grey
Average Weight	18.4 KG
PSI	2,000

GRASSHOPPER™
CONCRETE BLOCKS
& PAVEMENT TILES

UNI PAVERS



100mm - Heavy Load



80mm - Heavy Load



60mm - Standard Load

Dimension (mm)	222 x 110 x 100	222 x 110 x 80	222 x 110 x 60
Color	Grey / Red	Grey / Red	Grey / Red / Yellow / Black
Average Weight	5.5 KG	4.4 KG	3.2 KG
PSI	5,000	5,000	3,000

RECTANGULAR PAVERS



Heavy Load



Standard Load

Dimension (mm)	200 x 100 x 80	196 X 94 X 56
Color	Grey / Red / Black	Grey / Red / Yellow / Black
Average Weight	3.6 KG	2.5 KG
PSI	5,000	2,000



PAVERS, CURBSTONE & DRAIN



HPB100G

H Paver



HPB060G

Hexagon Paver



FPB

Footpath Paver

Dimension (mm)	200 x 160 x 100	250 x 250 x 60	600 x 200 x 60
Color	Grey	Grey	Grey / Red / Yellow
Average Weight	6.5 KG	5.5 KG	16.0 KG
PSI	5,000	3,000	3,000



CSBMINI

Mini Curb Stone



CSBMEDIAN

Median Curb Stone



CSBK1150

Curbstone - K1

Dimension (mm)	300 x 250 x 100	530 x 200 x 200	550 x 380 x 150/120
Color	Grey	Grey	Grey
Average Weight	25.0 KG	35.0 KG	63.0 KG
PSI	3,000	3,000	3,000



CSBK6

Curbstone - K6



SDB150G

Saucer Drain



EBL150G

Edging Block

Dimension (mm)	500 x 400 x 120	400 x 300 x 150	500 x 250 x 150
Color	Grey	Grey	Grey
Average Weight	42.5 KG	30.0 KG	42.5 KG
PSI	3,000	3,000	5,000

PAVEMENT TILES



Dimension (mm)	300 x 300 x 25 / 18
Color	White / Grey / Red / Black / Yellow
Average Weight	3.80 - 4.40 KG
PSI	1,800 -2,000



GRASSHOPPER™
CONCRETE BLOCKS
& PAVEMENT TILES

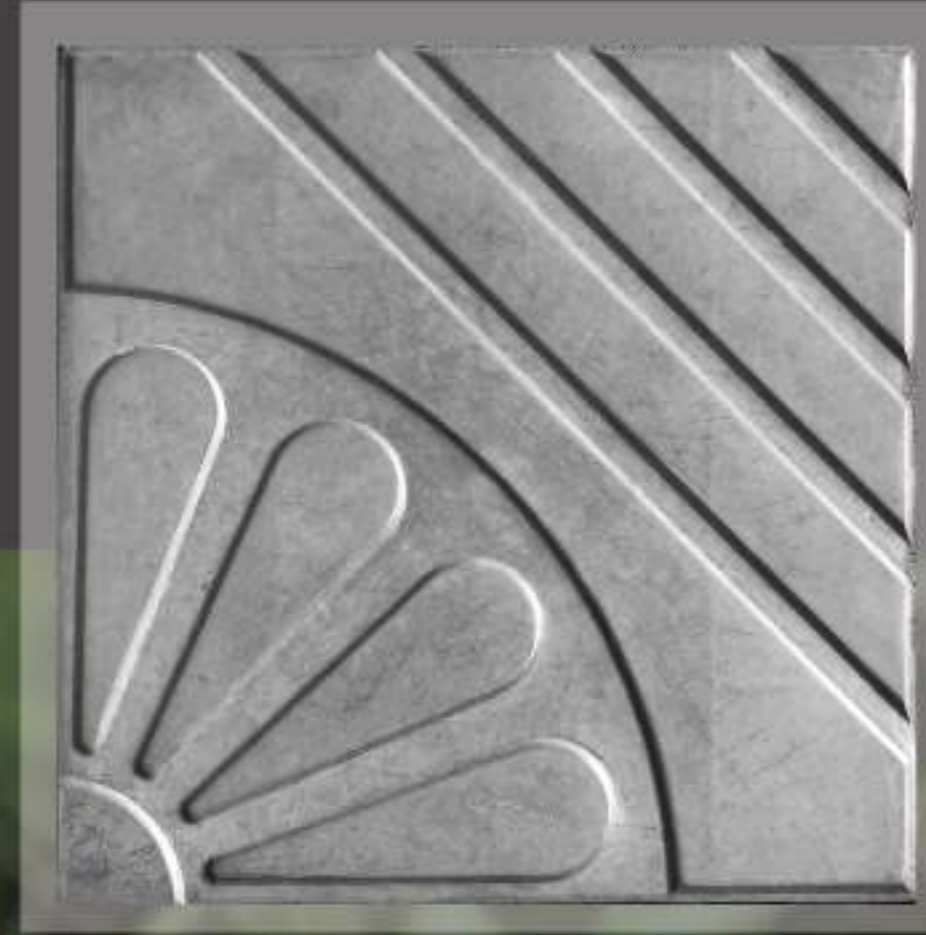
PAVEMENT TILES



GBML PT01 12" x 12"



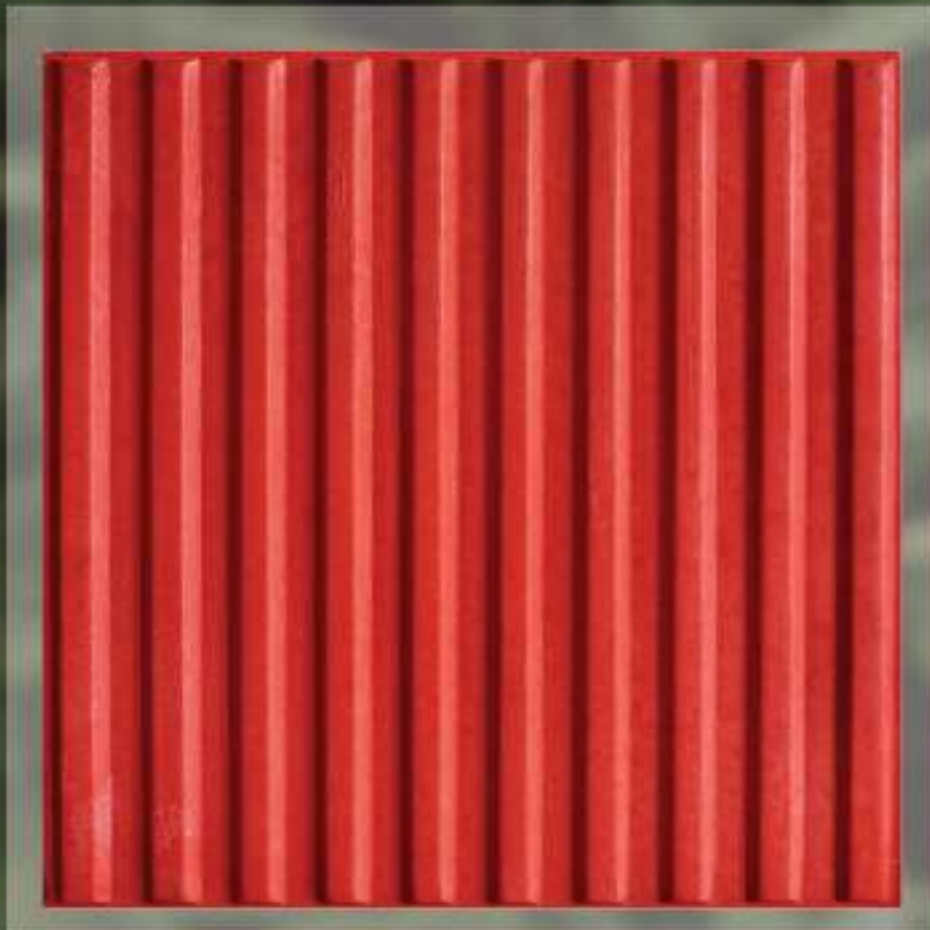
GBML PT02 12" x 12"



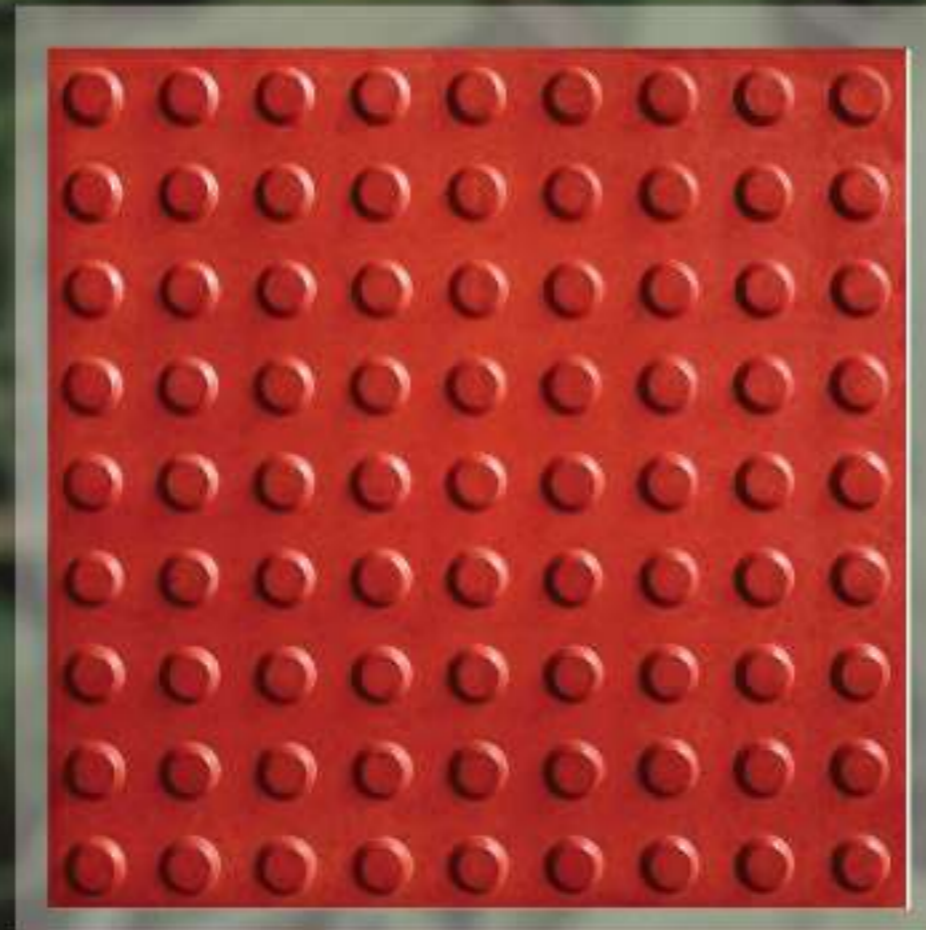
GBML PT03 12" x 12"



GBML PT04 12" x 12"



GBML PT05 12" x 12"



GBML PT06 12" x 12"



GBML PT07 12" x 12"



GBML PT08 12" x 12"



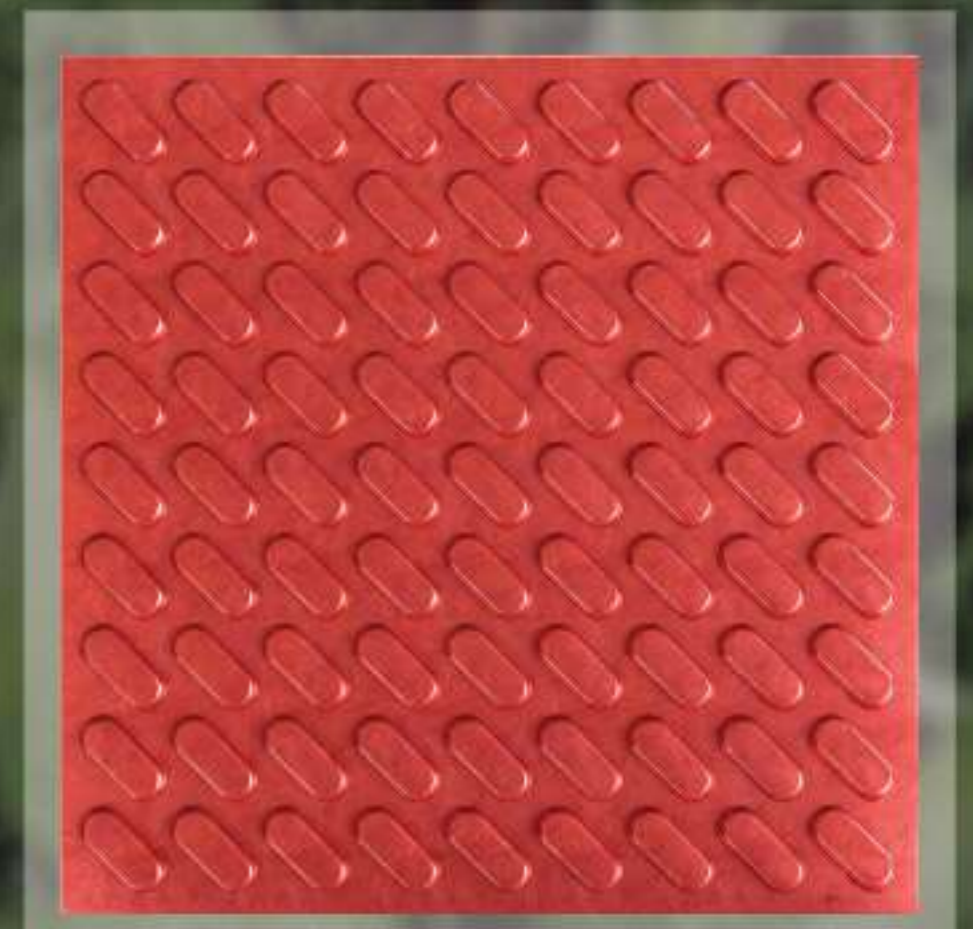
GBML PT09 12" x 12"



GBML PT10 12" x 12"



GBML PT11 12" x 12"



GBML PT12 12" x 12"



GBML PT13 12" x 12"



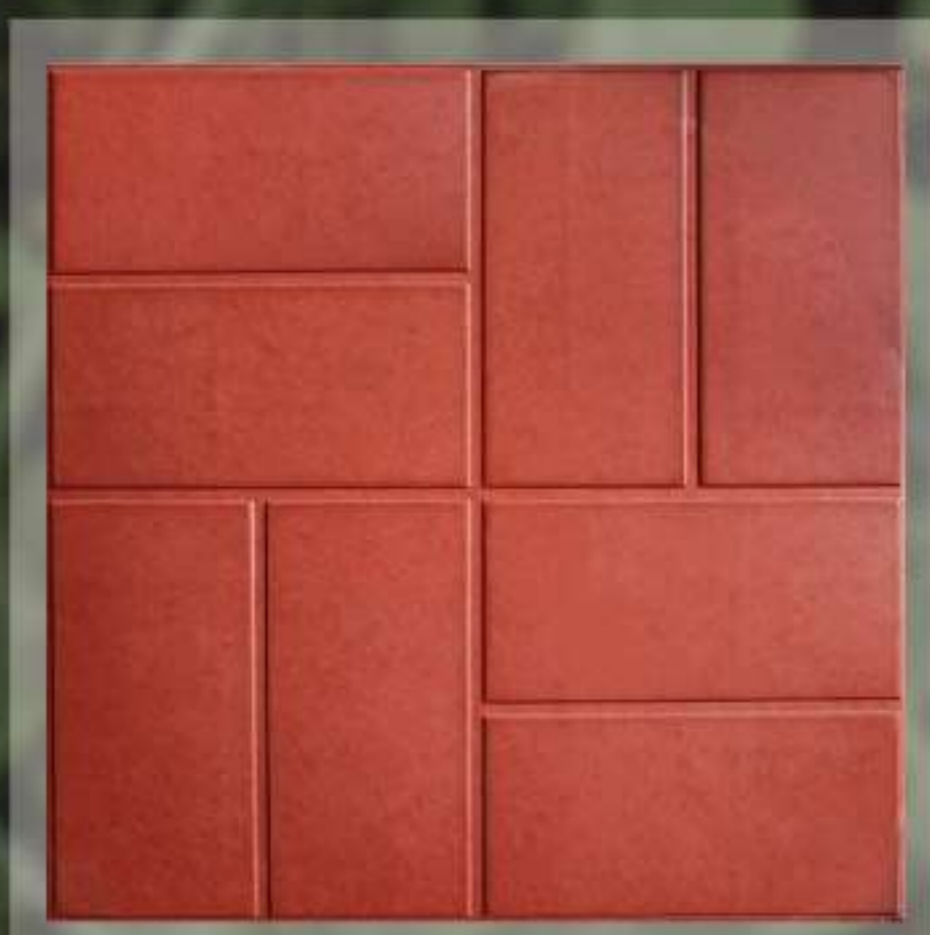
GBML PT14 12" x 12"



GBML PT15 12" x 12"



GBML PT16 12" x 12"



GBML PT17 12" x 12"



GBML PT18 12" x 12"

GRASSHOPPER™
CONCRETE BLOCKS
& PAVEMENT TILES

QUALITY ASSURED

Perfect Ratio of Concrete Mixing & Proper Curing

Visual Inspection

Weight

Sound Check

Low Water Absorption

Density and Compressive Strength

Alignment and Straightness

Surface Hardness

Sample Tested in Laboratories

RAW MATERIALS

Cement (ASTM C150/C150M, BDS EN197-1: 2003)

Sand (Fine Aggregate)

Water

Pea Gravel

Stone Dust

Coarse Aggregate

Admixture

Colors (if required)



GRASSHOPPER™
CONCRETE BLOCKS
& PAVEMENT TILES

HOW TO USE CONCRETE BLOCKS

The first layer of blocks should be laid on the CC roof or any straight level floor.

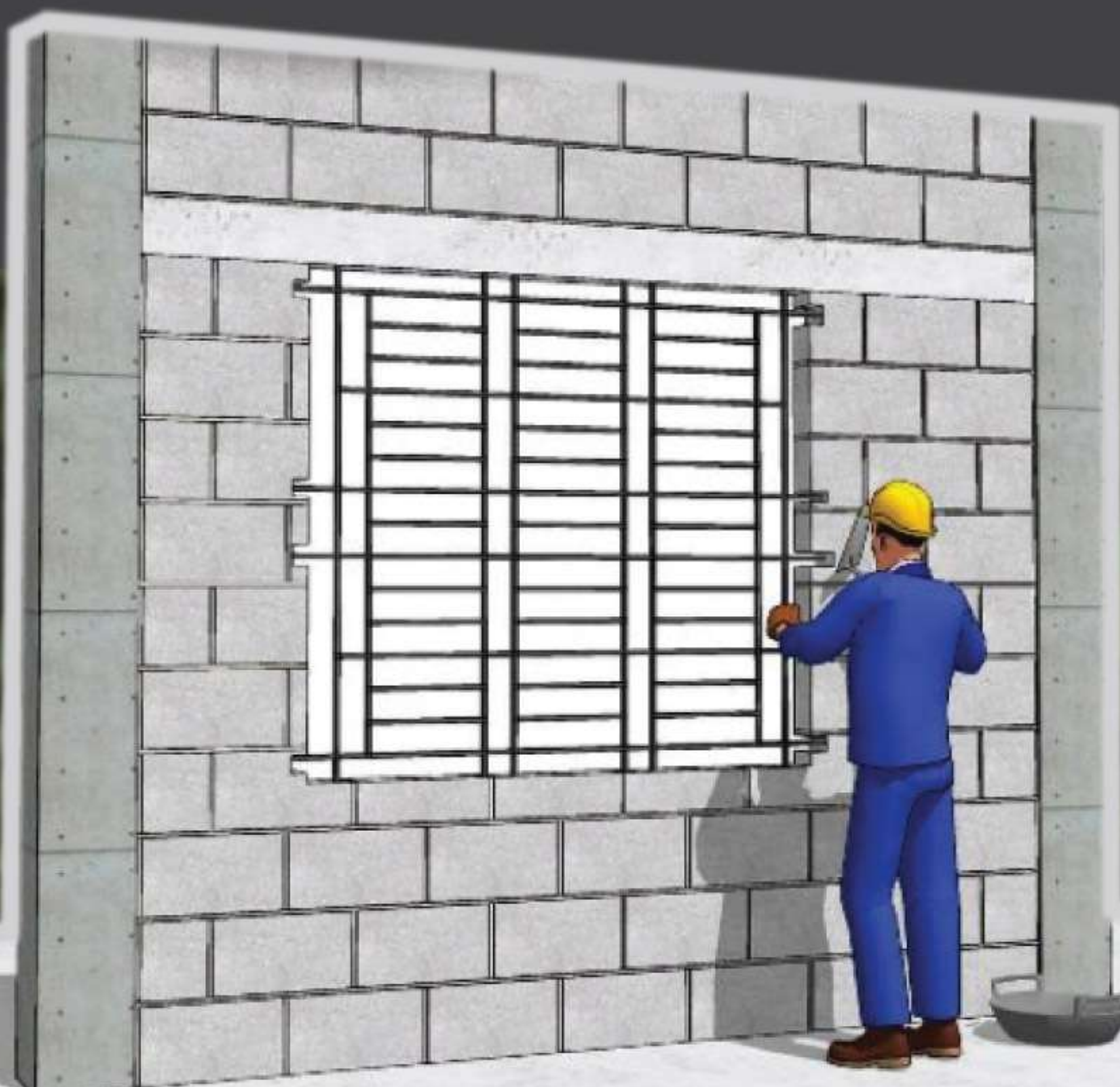
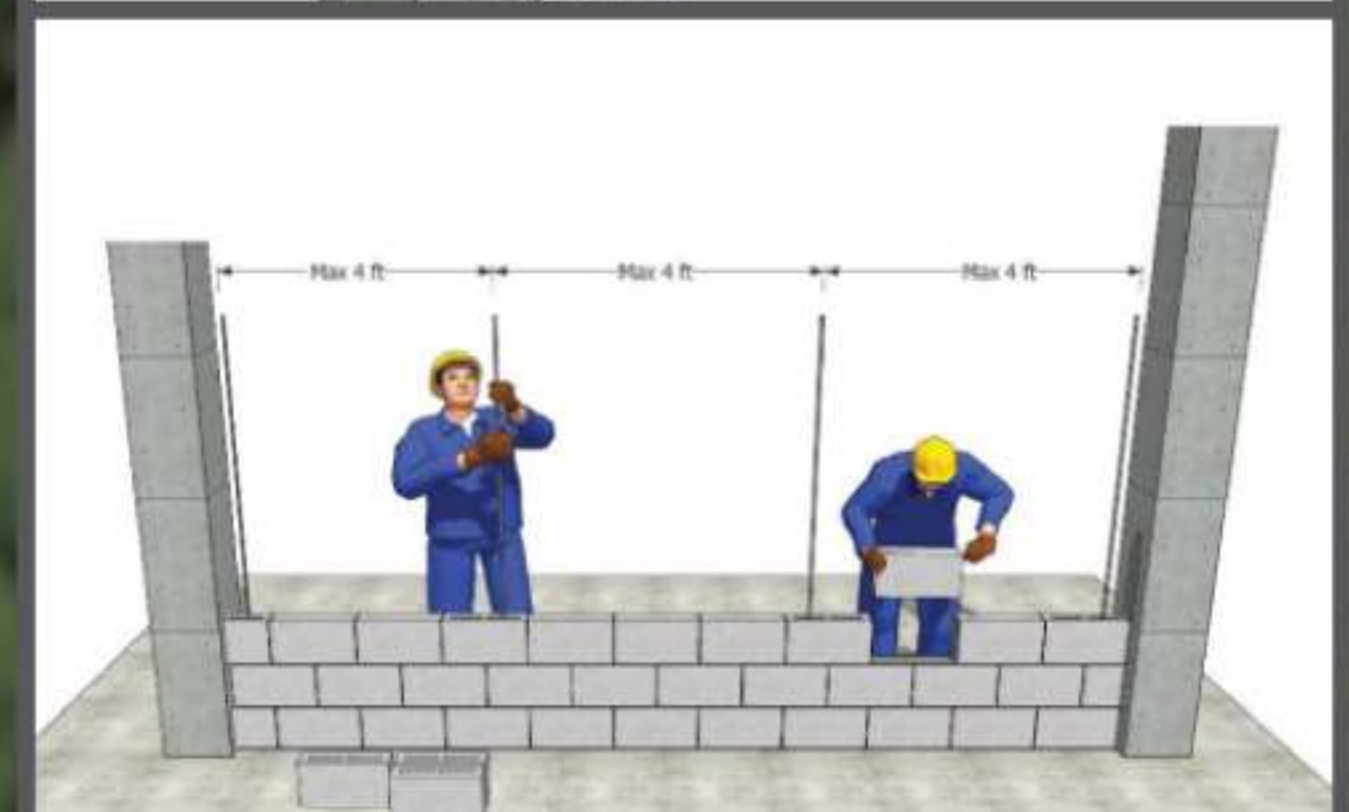
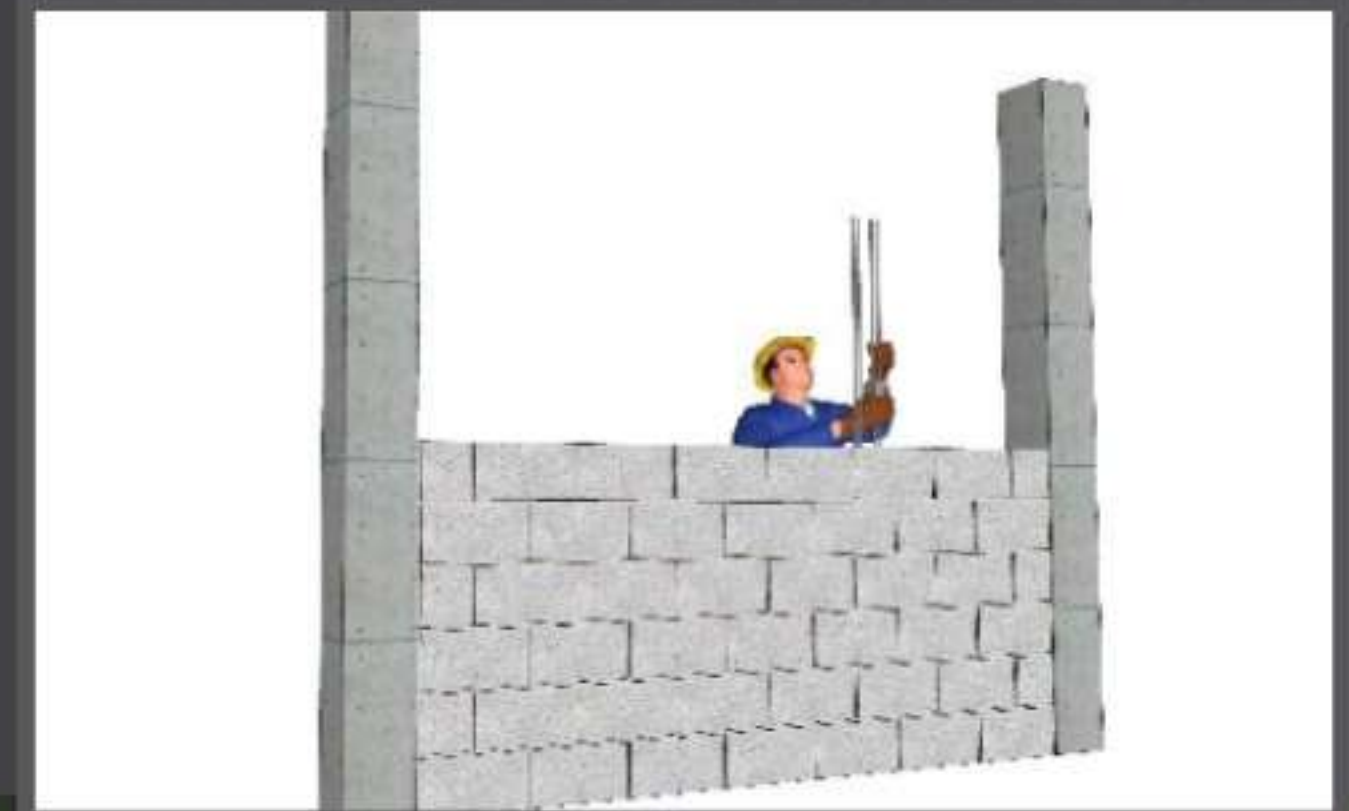
Use mortar mix of masonry mixture (30 ml per bag of cement).

Build walls with dry blocks, do not soak blocks in water like traditional bricks.

The bottom of our block is closed to prevent mortar from falling into the hollow part of the block. During masonry, the block should be laid upside down.

Leave 1/8th space under the beam or ceiling which should be filled later when plastering.

Build up to 4 layers in 90 mm block, 5 layers in 100 mm block, 6 layers in 140 mm block at a time.



GRASSHOPPER™
**CONCRETE BLOCKS
& PAVEMENT TILES**



Download Product Catalog

Grasshopper Group

Rahbar Tower (5th Floor)
75-76 Janata Housing, Ring Road
Adabor, Dhaka 1207, Bangladesh.

Phone: (88) 02 58155904
Fax: (88) 02 55020017
info@grasshoppergroupbd.com

www.grasshoppergroupbd.com



88 01917 960 900

